

- Description: • 2-way ball valves.
- Material: • Nickel-plated brass.
- Operating pressure: • Up to 30 bar (435 psi) depending on series.
- Operating temperature: • From -20°C to +120°C.
- Applications: • Designed for pneumatic systems and other low pressure applications.

- Advantages: • Reduced pressure drop.
- Benefits: • Cost saving.
• Operator safety.

BVG4 - BSPP female valve with lever handle



64 Parker Direct Link

Part number	Thread BSPP
BVG4-1/4L	1/4
BVG4-3/8L	3/8
BVG4-1/2L	1/2
BVG4-3/4L	3/4
BVG4-1L	1
BVG4-1.1/4L	1 1/4
BVG4-1.1/2L	1 1/2
BVG4-2L	2

MBVG4 - BSPP female valve



64 Parker Direct Link

Part number	Thread BSPP
MBVG4-1/4	1/4
MBVG4-3/8	3/8
MBVG4-1/2	1/2

BVG4P - BSPP female valve lockable lever



64 Parker Direct Link

Part number	Thread BSPP
BVG4P-1/4LOCK	1/4
BVG4P-3/8LOCK	3/8
BVG4P-1/2LOCK	1/2
BVG4P-3/4LOCK	3/4
BVG4P-1LOCK	1

- Construction:
 - Brass body, nickel-plated brass ball, brass stem, brass threaded insert, perbunan O-Ring stem seal, rilsan graphite ball seals, handle.
- Recommended fluids:
 - A large choice is possible.
- Operating pressure:
 - From 20 to 40 bar, depending on the model.
- Operating temperature:
 - From -20°C to +80°C.
- Applications:
 - Our industrial ball valves can be used in many applications: industrial, industrial automation, fluid and process control.
- Advantages:
 - Wide range (different types of technology and materials, various shapes and functions), compensating O-Rings, specific ball seal configuration.
- Benefits:
 - Many choices, optimum sealing, excellent resistance to scaling, smooth operation due to low friction coefficient of chemically nickel-plated brass, excellent resistance to pressure and temperature constraints.

4902 - Fluoropolymer Series - Double Female



64 Parker PowerLink

Part number	Outside Diameter mm	Thread BSPP
4902 10 13	10	G1/4
4902 10 17	10	G3/8
4902 15 21	15	G1/2
4902 20 27	20	G3/4

0492 - Light Series Ball Valve - Double Female



64 Parker PowerLink

Part number	Outside Diameter mm	Thread BSPP
0492 04 13	4	G1/4
0492 04 13 64*	4	G1/4
0492 07 17	7	G3/8
0492 10 21	10	G1/2

* Zamac short handle

0402 - Standard In-Line Ball Valve - Double Female



64 Parker
Direct Link

Part number	Outside Diameter mm	Thread BSPP
0402 07 13	7	G1/4
0402 10 17	10	G3/8
0402 13 21	13	G1/2

0439 - Lockable Ball Valve - Double Female



64 Parker
Direct Link

Part number	Outside Diameter mm	Thread BSPP
0439 07 13	7	G1/4
0439 10 17	10	G3/8
0439 13 21	13	G1/2

VB - Non Return Valve - Female

2



156 Parker DirectLink

Part number	Type	Thread BSPF
VB12-Q-NQ-5	Aluminium	1/8
VB22-Q-NQ-5	Aluminium	1/4
VB42-Q-NQ-5	Aluminium	1/2

PNEUMATICS

PWA-L - Non Return Valve - Push-in



156 Parker DirectLink

Part number	Type	Outside Diameter mm
PWA-L1444	Plastic series	4
PWA-L1466	Plastic series	6
PWA-L1488	Plastic series	8



P6M-PA - Exhaust silencer - Plastic series



156 Parker DirectLink

Part number	Type	Thread
P6M-PAC5	Plastic series	M5
P6M-PAB1	Plastic series	1/8
P6M-PAB2	Plastic series	1/4
P6M-PAB3	Plastic series	3/8
P6M-PAB4	Plastic series	1/2
P6M-PAB6	Plastic series	3/4
P6M-PAB8	Plastic series	1

Exhaust restrictor - Silencer



156 Parker DirectLink

Part number	Type	Thread
43006	Sintered Metal	1/8
T53006	Sintered Metal	1/4
T63006A	Sintered Metal	3/8
B73006	Sintered Metal	1/2

Sleeve type hand adjusted

Exhaust silencer - Sintered bronze



156 Parker DirectLink

Part number	Type	Thread
9721900005	Sintered bronze	M5
9090050700	Sintered bronze	1/8
P6M-BAA2	Sintered bronze	1/4
9090050900	Sintered bronze	3/8
9090051000	Sintered bronze	1/2

Exhaust silencer - Push-in series



156 Parker DirectLink

Part number	Type
PXC-X14	Silencer
PZC-S1006	Silencer
PZC-S1008	Silencer

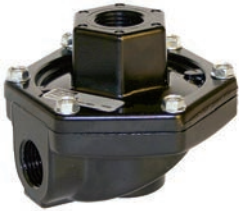
Shuttle valve



Part number	Thread
M33005	M5
B43005B	1/8
B53005A	1/4

156 Parker DirectLink

P4Q - Quick-exhaust valve



Part number	Thread
P4Q-BA12	1/4
P4Q-BA13	3/8
P4Q-CA14	1/2
P4Q-CA16	3/4

156 Parker DirectLink

VQB - Flow Control valve with bypass



Part number	Thread
VQB12-Q-Q-5	1/8
VQB22-Q-Q-5	1/4
VQB42-Q-Q-5	1/2

156 Parker DirectLink

2

PNEUMATICS

Construction:	<ul style="list-style-type: none"> Anodised aluminium body, aluminium spool with nitrile over-moulded rubber coating.
Recommended fluids:	<ul style="list-style-type: none"> Compressed air, dry air and inert gases.
Operating pressure:	<ul style="list-style-type: none"> Max. P2LAX = 16 bar, P2LBX = 16 bar, P2LCX = 12 bar, P2LDX = 12 bar.
Operating temperature:	<ul style="list-style-type: none"> Standard -10°C to +50°C. Low temperature version -40°C to +60°C. Mobile version -40°C to +60°C.
Port size:	<ul style="list-style-type: none"> P2LAX = G1/8, P2LBX = G1/4, P2LCX = G3/8, P2LDX = G1/2.
Applications:	<ul style="list-style-type: none"> Pneumatic systems and general industrial applications including mobile.
Advantages:	<ul style="list-style-type: none"> Viking Xtreme® valves provide increased flow capacity over many competitors' products. Over-moulded spool technology gives good performance at high flows with high pressure drops. Valves have passed rigorous salt spray tests and vibration testing for mobile applications. Solenoids to suit wide range of industrial and mobile applications having 15 mm and 22 mm solenoid options. Spool design prevents cross over flow between ports during changeover.
Benefits:	<ul style="list-style-type: none"> Machine speeds can be increased. Valve sizes can be reduced. Stable performance under extreme operating conditions. Reliable performance even in extreme conditions. Can be specified for wide range of applications in industrial or mobile applications. No chance of valve stalling on high flow/pressure drop applications due to pilot air starvation.

**Pneumatically actuated 5/2 and 5/3 valves
Temperature -40°C to +60°C**



132 Parker DirectLink

Part number	Thread	Max. Operating Pressure	Actuator	Return
	BSPP	bar		
P2LAX511PP	1/8	16	Air-pilot	Air-pilot
P2LBX512PP	1/4	16	Air-pilot	Air-pilot
P2LCX513PP	3/8	12	Air-pilot	Air-pilot
P2LDX514PP	1/2	12	Air-pilot	Air-pilot
P2LAX511PS	1/8	16	Air-pilot	Spring
P2LBX512PS	1/4	16	Air-pilot	Spring
P2LCX513PS	3/8	12	Air-pilot	Spring
P2LDX514PS	1/2	12	Air-pilot	Spring
P2LAX611PP	1/8	16	-	-
P2LBX612PP	1/4	16	Air-pilot	Air-pilot
P2LCX613PP	3/8	12	Closed centre	Self centring
P2LDX614PP	1/2	12	-	-
P2LAX811PP	1/8	16	-	-
P2LBX812PP	1/4	16	Air-pilot	Air-pilot
P2LCX813PP	3/8	12	Vented centre	Self centring
P2LDX814PP	1/2	12	-	-
P2LAX711PP	1/8	16	-	-
P2LBX712PP	1/4	16	Air-pilot	Air-pilot
P2LCX713PP	3/8	12	Pressure centre	Self centring
P2LDX714PP	1/2	12	-	-

Electrically actuated 5/2 and 5/3 valves - 15mm Solenoid
Temperature range -10°C to +50°C - Max. Operating pressure 10 bar

2



132 Partner
DirectLink

PNEUMATICS

Part number	Thread BSP	Actuator	Return
Order code 15mm Solenoid 24V DC			
P2LAX511EENXB549	1/8	Solenoid	Solenoid
P2L BX512EENXB549	1/4	Solenoid	Solenoid
P2LCX513EENXB549	3/8	Solenoid	Solenoid
P2LDX514EENXB549	1/2	Solenoid	Solenoid
P2LAX511ESN XB549	1/8	Solenoid	Spring
P2L BX512ESN XB549	1/4	Solenoid	Spring
P2LCX513ESN XB549	3/8	Solenoid	Spring
P2LDX514ESN XB549	1/2	Solenoid	Spring
P2LAX611EENXB549	1/8	-	-
P2L BX612EENXB549	1/4	Air-pilot	Air-pilot
P2LCX613EENXB549	3/8	Closed centre	Self centring
P2LDX614EENXB549	1/2	-	-
P2LAX811EENXB549	1/8	-	-
P2L BX812EENXB549	1/4	Air-pilot	Air-pilot
P2LCX813EENXB549	3/8	Vented centre	Self centring
P2LDX814EENXB549	1/2	-	-
P2LAX711EENXB549	1/8	-	-
P2L BX712EENXB549	1/4	Air-pilot	Air-pilot
P2LCX713EENXB549	3/8	Pressure center	Self centring
P2LDX714EENXB549	1/2	-	-
Order code Internal supply, without solenoid			
P2LAX511EENXXX	1/8	Solenoid	Solenoid
P2L BX512EENXXX	1/4	Solenoid	Solenoid
P2LCX513EENXXX	3/8	Solenoid	Solenoid
P2LDX514EENXXX	1/2	Solenoid	Solenoid
P2LAX511ESNXXX	1/8	Solenoid	Spring
P2L BX512ESNXXX	1/4	Solenoid	Spring
P2LCX513ESNXXX	3/8	Solenoid	Spring
P2LDX514ESNXXX	1/2	Solenoid	Spring
P2LAX611EENXXX	1/8	-	-
P2L BX612EENXXX	1/4	Air-pilot	Air-pilot
P2LCX613EENXXX	3/8	Closed centre	Self centring
P2LDX614EENXXX	1/2	-	-
P2LAX811EENXXX	1/8	-	-
P2L BX812EENXXX	1/4	Air-pilot	Air-pilot
P2LCX813EENXXX	3/8	Vented centre	Self centring
P2LDX814EENXXX	1/2	-	-
P2LAX711EENXXX	1/8	-	-
P2L BX712EENXXX	1/4	Air-pilot	Air-pilot
P2LCX713EENXXX	3/8	Pressure center	Self centring
P2LDX714EENXXX	1/2	-	-



Electrically actuated 5/2 and 5/3 valves - 22mm Solenoid
Temperature range -10°C to +50°C - Max. Operating pressure 10 bar



132 Parker DirectLok

Part number	Thread BSPF	Actuator	Return
Solenoid 24V DC			
P2LAX511EENDB49	1/8	Solenoid	Solenoid
P2LBX512EENDB49	1/4	Solenoid	Solenoid
P2LCX513EENDB49	3/8	Solenoid	Solenoid
P2LDX514EENDB49	1/2	Solenoid	Solenoid
P2LAX511ESNDB49	1/8	Solenoid	Spring
P2LBX512ESNDB49	1/4	Solenoid	Spring
P2LCX513ESNDB49	3/8	Solenoid	Spring
P2LDX514ESNDB49	1/2	Solenoid	Spring
P2LAX611EENDB49	1/8	-	-
P2LBX612EENDB49	1/4	Air-pilot	Air-pilot
P2LCX613EENDB49	3/8	Closed centre	Self centring
P2LDX614EENDB49	1/2	-	-
P2LAX811EENDB49	1/8	-	-
P2LBX812EENDB49	1/4	Air-pilot	Air-pilot
P2LCX813EENDB49	3/8	Vented centre	Self centring
P2LDX814EENDB49	1/2	-	-
P2LAX711EENDB49	1/8	-	-
P2LBX712EENDB49	1/4	Air-pilot	Air-pilot
P2LCX713EENDB49	3/8	Pressure centre	Self centring
P2LDX714EENDB49	1/2	-	-
Order code Internal supply, without solenoid			
P2LAX511EENDDN	1/8	Solenoid	Solenoid
P2LBX512EENDDN	1/4	Solenoid	Solenoid
P2LCX513EENDDN	3/8	Solenoid	Solenoid
P2LDX514EENDDN	1/2	Solenoid	Solenoid
P2LAX511ESNDDN	1/8	Solenoid	Spring
P2LBX512ESNDDN	1/4	Solenoid	Spring
P2LCX513ESNDDN	3/8	Solenoid	Spring
P2LDX514ESNDDN	1/2	Solenoid	Spring
P2LAX611EENDDN	1/8	-	-
P2LBX612EENDDN	1/4	Air-pilot	Air-pilot
P2LCX613EENDDN	3/8	Closed centre	Self centring
P2LDX614EENDDN	1/2	-	-
P2LAX811EENDDN	1/8	-	-
P2LBX812EENDDN	1/4	Air-pilot	Air-pilot
P2LCX813EENDDN	3/8	Vented centre	Self centring
P2LDX814EENDDN	1/2	-	-
P2LAX711EENDDN	1/8	-	-
P2LBX712EENDDN	1/4	Air-pilot	Air-pilot
P2LCX713EENDDN	3/8	Pressure centre	Self centring
P2LDX714EENDDN	1/2	-	-



Electrically actuated 5/2 valves - Xtreme Duty
Temperature range -40°C to + 60°C - Max. Operating pressure 16 bar

2



132 Partner DirectLink

PNEUMATICS

Part number	Thread BSP	Actuator	Return
Order code 22mm Solenoid 24V DC			
P2LAX511EEHDB49	1/8	Solenoid	Solenoid
P2LBX512EEHDB49	1/4	Solenoid	Solenoid
P2LCX513EEHDB49	3/8	Solenoid	Solenoid
P2LDX514EEHDB49	1/2	Solenoid	Solenoid
P2LAX511ESHDB49	1/8	Solenoid	Spring
P2LBX512ESHDB49	1/4	Solenoid	Spring
P2LCX513ESHDB49	3/8	Solenoid	Spring
P2LDX514ESHDB49	1/2	Solenoid	Spring
Order code Internal supply, without solenoid			
P2LAX511EEHDDN	1/8	Solenoid	Solenoid
P2LBX512EEHDDN	1/4	Solenoid	Solenoid
P2LCX513EEHDDN	3/8	Solenoid	Solenoid
P2LDX514EEHDDN	1/2	Solenoid	Solenoid
P2LAX511ESHDDN	1/8	Solenoid	Spring
P2LBX512ESHDDN	1/4	Solenoid	Spring
P2LCX513ESHDDN	3/8	Solenoid	Spring
P2LDX514ESHDDN	1/2	Solenoid	Spring



Lever operated 5/2 and 5/3 valves
Temperature range -40°C to + 60°C - Max. Operating pressure 16 bar



132 Parker DirectLink

Part number	Type	Thread BSP	Actuator	Return
P2LAX511VV	5/2	1/8	Lever	Lever
P2LBX512VS	5/2	1/4	Lever	Lever
P2LCX513VS	5/2	3/8	Lever	Lever
P2LDX514VS	5/2	1/2	Lever	Lever
P2LAX511VS	5/2	1/8	Lever	Spring
P2LBX512VS	5/2	1/4	Lever	Spring
P2LCX513VS	5/2	3/8	Lever	Spring
P2LDX514VS	5/2	1/2	Lever	Spring
P2LAX61122	5/3	1/8	Lever	Closed centre position
P2LBX61222	5/3	1/4	Lever	Closed centre position
P2LCX61322	5/3	3/8	Lever	Closed centre position
P2LDX61422	5/3	1/2	Lever	Closed centre position
P2LAX81122	5/3	1/8	Lever	Vented centre position
P2LBX81222	5/3	1/4	Lever	Vented centre position
P2LCX81322	5/3	3/8	Lever	Vented centre position
P2LDX81422	5/3	1/2	Lever	Vented centre position
P2LAX71122	5/3	1/8	Lever	Pressurised centre position
P2LBX71222	5/3	1/4	Lever	Pressurised centre position
P2LCX71322	5/3	3/8	Lever	Pressurised centre position
P2LDX71422	5/3	1/2	Lever	Pressurised centre position
P2LAX61111	5/3	1/8	Lever self centring	Closed centre position
P2LBX61211	5/3	1/4	Lever self centring	Closed centre position
P2LCX61311	5/3	3/8	Lever self centring	Closed centre position
P2LDX61411	5/3	1/2	Lever self centring	Closed centre position
P2LAX81111	5/3	1/8	Lever self centring	Vented centre position
P2LBX81211	5/3	1/4	Lever self centring	Vented centre position
P2LCX81311	5/3	3/8	Lever self centring	Vented centre position
P2LDX81411	5/3	1/2	Lever self centring	Vented centre position
P2LAX71111	5/3	1/8	Lever self centring	Pressurised centre position
P2LBX71211	5/3	1/4	Lever self centring	Pressurised centre position
P2LCX71311	5/3	3/8	Lever self centring	Pressurised centre position
P2LDX71411	5/3	1/2	Lever self centring	Pressurised centre position

2

PNEUMATICS

Solenoid connectors / cable plugs

Part number	Form C (15 mm)	Type
3EV10V10	P8C-D	Standard IP65 without flying lead

132 Parker DirectLink

Solenoid coils for 22 mm Solenoid operators

2



132 Parker DirectLink

Part number	Form B (22 mm)	Voltage
P2FCA447	P2FCB447	12V DC Mobile
P2FCA448	P2FCB448	24V DC Mobile
	P2FCB442	24V 50/60Hz
	P2FCB445	12V DC
	P2FCB449	24V DC
	P2FCB451	48V DC
	P2FCB453	110V/50Hz, 120V/60Hz
	P2FCB457	230V/50Hz, 230V/60Hz

Note : Mobile solenoids have wide band voltage tolerance Form A = +/- 30% and Form B = -10% to +30%. These coils should only be used with Xtreme duty range having 'H' in part number

Solenoid coils for 15 mm Solenoid operators



132 Parker DirectLink

Part number		Voltage
without manual override	with non-locking override	
P2E-KV32B0	P2E-KV32B1	12 VDC
P2E-KV32C0	P2E-KV32C1	24 VDC
P2E-KV32D0	P2E-KV32D1	48 VDC
P2E-KV31C0	P2E-KV31C1	24 VAC 50Hz
P2E-KV34D0	P2E-KV34D1	48 VAC 50/60Hz
P2E-KV31F0	P2E-KV31F1	115 VAC 50Hz/120V AC 50Hz
P2E-KV31J0	P2E-KV31J1	230 VAC 50Hz/240 V AC 60Hz

Note : Mounting screws included in basic valve

PNEUMATICS



- Operating pressure: • Max. 7 bar (101 psi).
 Operating temperature: • From -20°C to +100°C.

- Advantages: • Ergonomically designed.
 Benefits: • Comfortable to use.

600 Series - Blow guns



64 Parker
Direct Link

Part number	Type	Thread BSPB
600	Standard safety	1/4
601	Air Shield	1/4

600 Series - Blow gun accessories



64 Parker
PowerLine

Part number	Type
607	Aluminium nozzle with 1 mm orifice*
8972-8	Domed nozzle*
401C	Aspirator safety nozzle*
8726A	Flexible nozzle*

*Note: when used with pressure above 2 bar, adequate safety precautions must be taken.

- Description:**
- Blow gun with short nozzle is ideal for blowing out blind holes and workpieces.
 - Blow gun with extension pipe is ideal for blowing out deep holes and inaccessible locations.
- Material:**
- Aluminium or resistant plastic.
- Operating temperature:**
- From -20°C to +50°C.

- Advantages:**
- Ergonomic smooth design, light weight, highly resistant thermoplastic material.
- Benefits:**
- Long nozzle to access not easily accessible areas for cleaning out.

2

Blow gun - Thermoplastics



64 Parker
Direct Link

Part number	Connection	Thread BSPP	Operating Pressure	
			bar	psi
AK13S_99	female	1/4	12	170
AK26SFS_99	nipple 26 series		12	170

Blow gun - Aluminium



64 Parker
Direct Link

Part number	Connection	Thread BSPP	Operating Pressure	
			bar	psi
AA13	female	1/4	10	140
AA26SF	nipple 26 series		10	140

PNEUMATICS



Description:	<ul style="list-style-type: none"> • Size: 1/4» BSPP for the inlet port.
Construction:	<ul style="list-style-type: none"> • Polyamide 6.6, 30% glass fibre body and trigger, nitrile seal, nickel-plated brass nozzle or aluminium nozzle (depending on the version), nickel-plated brass pin.
Recommended fluids:	<ul style="list-style-type: none"> • Compressed air. Please consult us for other fluids.
Operating pressure:	<ul style="list-style-type: none"> • Up to 10 bar.
Operating temperature:	<ul style="list-style-type: none"> • From -15°C to +50°C.
Applications:	<ul style="list-style-type: none"> • Industrial, Industrial Automation, Transportation.
Advantages:	<ul style="list-style-type: none"> • Progressive and directional air jet up to 10 bar, numerous hanging points for quick and easy removal, compliant with OSHA directives.
Benefits:	<ul style="list-style-type: none"> • Quality and performance, handling and comfort. The blowgun kit facilitates the use of the blowgun, guarantees safety regarding assembly of components and makes item code management easier.

0659 - Standard Blow gun with angled nozzle - BSPP Threads



64 Parker Direct Link

Part number	Tube Outside Diameter mm	Thread BSPP	Safety
0659 00 13	3.5	G1/4	Yes

0631 - Kit : Blow gun with angled nozzle - BSPP Threads



64 Parker Direct Link

Part number	Tube Outside Diameter mm	Thread BSPP	Safety
0631 00 01	3.5	G1/4	Yes
0631 00 08		G1/5	*depending on nozzle
0631 00 03		G1/6	No
0631 00 05		G1/7	Yes
0631 00 07		G1/8	*depending on nozzle
0631 00 09	3.5	G1/9	Yes



- Description:**
- This extremely durable hose is ideal for use in tough work areas or highly mobile applications.
 - Light weight, wide temperature range, high resistance to moisture, insensitive to salt water, long service.
- Material:**
- Polyurethane.
- Operating temperature:**
- From -20°C to +70°C.
- Applications:**
- Compressed air, lubrication grease/oil, gasoline or hydraulics.
- Advantages:**
- Based on highly resistant polyether material.
 - Both ends equipped with swivel fitting G1/4".
- Benefits:**
- Kinking damage reduced to minimum.
 - Swivel fittings at both ends.

Tubing Sets - Polyurethane



156 Parker DirectLink

Part number	Connection inch	Inside x Outside	Coil outside diameter	Max. Operating length m
Polyurethane coiled hose with straight extensions 508 mm and 127 mm				
PU10/060/DV	1/4	6.3 x 9.5	60	6.0
PU12/075/DV	3/8	8.0 x 12.0	80	7.5

- Description:**
- Nylon tubing for safer, more efficient air power transmission.
 - Light weight, wide temperature range, high resistance to moisture, insensitive to salt water, high elasticity.
- Material:**
- Nylon 12.
- Operating temperature:**
- From -20°C to +70°C.
- Applications:**
- Compressed air, lubrication grease/oil, gasoline or hydraulics.

- Advantages:**
- Resistant PA tubing for all kind of kinds of application in air and liquid.
- Benefits:**
- Most used air tubing in the market.

Tubing Sets - Nylon 12



156 Parker DirectLink

Part number	Connection series	Inside x Outside	Coil outside diameter	Max. Operating length m	Approx. Coils
Hose completely assembled with coupling and plug series 26 with spring guards					
SP08/050/K+S	26	6.3 x 7.9	75	5	30
SP12/075/K+S	26	9.5 x 11.8	140	7.5	23